



**Official Handling Agent, Forwarder
& Customs Broker**

**TFWA World Exhibition & Conference
From October 24th to October 28th 2021**

EXHIBITORS

1 - THE TRANSPORT OF THE PRODUCTS	3
Air freight Transport	3
Road Transport	4
Ocean Freight Transport	5
Integrated Express Transport	6
2 - UNLOADING IN CANNES	7
3 - CUSTOMS FORMALITY	7
4 - STORING BEFORE THE EXHIBITION	7
5 - DELIVERY ON STAND	8
6 - STORING DURING THE EXHIBITION	8
7 - RETURN TRANSPORT	8

STAND CONTRACTORS

1 - TRANSPORT OF THE STAND EQUIPMENT	9
Road Transport	9
Airfreight Transport	10
Ocean Freight Transport	11
Integrated Express Transport	12
2 - UNLOADING AND DELIVERY OF THE STAND EQUIPMENT	13
3 - CUSTOMS FORMALITY	13
4 - STORAGE OF THE EMPTIES	13
5 - RETURN TRANSPORT OF THE STAND EQUIPMENT	14
6 - ANNUAL STORAGE	14

ANNEXES

Access Map to la Bocca Parking	15
Access Map to ONSITE / MATHEZ Warehouse	16
Access Map to ONSITE Meeting Point - 1/3	
“Blue”, “Yellow”, “Red” and “Green” villages	17
Access Map to ONSITE Meeting Point - 2/3	
“Marine”, “Golden”, “Ambassadeurs” and “Terrasses 5e étage”	18
villages Access Map to ONSITE Meeting Point - 3/3	
“Riviera”, “Méditerranée”, “Rotonde”, “Lerins” and “Bay” villages	19
Handling Quote Request Form	20
Delivery on Stand Request Form	21

CONTACT DETAILS



AIR FREIGHT TRANSPORT

The merchandise must arrive « prepaid », **at Nice Airport from October 6th to 20nd 2021.**

The transport between Nice and Cannes will be done, daily, with our own trucks.

We suggest you to join the **consolidated transportation**, organised from your country by ONSITE, through its network of agents, whose details will be provided on request. **(contacts page 22)**

We invite to return the attached **quote request**. **(form page 20)**

We will not be held responsible for any delay, lost, or damage of merchandise which will not be transported by ONSITE and/or be left unsupervised on stand.

1 - TRANSPORT OF PRODUCTS FOR THE AIR FREIGHT TRANSPORT

We kindly ask you to:

A - Consign A.W.B (airway bill) to:

MATHEZ ONSITE

06200 - AEROPORT NICE COTE D'AZUR - FRANCE

Notify: TFWA / Exhibiting company's Name / Stand Number / Color of Village

B - Supply us with:

1°/ **Two pro-forma invoices**, for the merchandises coming from non EU countries, addressed to:

EXHIBITING COMPANY's NAME

TFWA WE&C

PALAIS DES FESTIVALS

6400 CANNES, FRANCE

These two invoices will have to mention cargo content details:

- For the tobacco products: the quantity of unit, the net weight of pure tobacco, and the weight per unit.
- For the alcohol products: the quantity of unit, the content, the total litter of pure alcohol, the percentage of pure alcohol.

2°/ **Two packing-list** detailing the content, gross and net weight, volume of each parcel.

3°/ **Excise movement and control document or electronic transfer (AAD)** for all alcohol and tobacco products coming from EU countries.

To be raised on our excise number **001310E0010** corresponding to the address: MATHEZ - Avenue du 24 Aout - 06400 CANNES

C - Label each parcel as follow:

MATHEZ ONSITE / TFWA

Exhibiting company's Name / Stand Number / Color of Village



ROAD TRANSPORT

The merchandise must arrive « prepaid », **in Cannes from October 18th to 24th 2021.**

We suggest you to join the **consolidated transportation**, organised from your country by ONSITE, through its network of agents, whose details will be provided on request.
(contacts page 22)

We invite you to return the attached **quote request.**
(form page 20)

We will not be held responsible for any delay, lost, or damage of merchandise which will not be transported by ONSITE and/or be left unsupervised on stand.

FOR THE ROAD TRANSPORT

We kindly ask you to:

A - Consign transport document or CMR to:

MATHEZ ONSITE
ESPLANADE DE LA PANTIERO
06400 CANNES FRANCE
TFWA / Exhibiting company's Name / Stand Number / Color of Village

B - Supply us with:

1°/ **Two pro-forma invoices**, for the merchandises coming from non EU countries, addressed to:

EXHIBITING COMPANY's NAME
TFWA WE&C
PALAIS DES FESTIVALS
6400 CANNES, FRANCE

These two invoices will have to mention cargo content details:

- For the tobacco products: the quantity of unit, the net weight of pure tobacco, and the weight per unit.
- For the alcohol products: the quantity of unit, the content, the total litter of pure alcohol, the percentage of pure alcohol.

2°/ **Two packing-lists** detailing the content, gross & net weight and volume of each parcel.

3°/ **Excise movement and control document or electronic transfer (AAD)** for all alcohol and tobacco products coming from EU countries.

To be raised on our excise number **001310E0010** corresponding to the address: MATHEZ - Avenue du 24 Aout - 06400 CANNES

C - Label each parcel as follow:

MATHEZ ONSITE / TFWA
Exhibiting company's Name / Stand Number / Color of Village



OCEAN FREIGHT SHIPMENT

The merchandise must arrive "DAP **Cannes**" from **October 18th to 24th 2021**. The port of destination will be: Marseille or Fos. The bill of lading must be on « express release » basis and a copy must be e-mailed **ccluchague@onsitefr.com**. It will be impossible to trace the shipment without this copy.

We suggest you to join the **consolidated transportation**, organised from your country by ONSITE, through its network of agents, whose details will be provided on request. **(contacts page 22)**

We invite you to return the attached **quote request**. **(form page 20)**

We will not be held responsible for any delay, lost, or damage of merchandise which will not be transported by ON SITE and/or be left unsupervised on stand.

FOR OCEAN FREIGHT TRANSPORT

We kindly ask you to:

A - Consign Bill of Lading (B/L) to:

MATHEZ ONSITE
ESPLANADE DE LA PANTIERO
06400 CANNES FRANCE
TFWA / Exhibiting company's Name / Stand Number / Color of Village

B - Supply us with:

1°/ **Two pro-forma invoices**, for the merchandises coming from non EU countries, addressed to:

EXHIBITING COMPANY's NAME
TFWA WE&C
PALAIS DES FESTIVALS
6400 CANNES, FRANCE

These two invoices will have to mention cargo content details:

- For the tobacco products: the quantity of unit, the net weight of pure tobacco, and the weight per unit.
- For the alcohol products: the quantity of unit, the content, the total litter of pure alcohol, the percentage of pure alcohol.

2°/ **Two packing-lists** detailing the content, gross & net weight and volume of each parcel.

3°/ **Excise movement and control document or electronic transfer (AAD)** for all alcohol and tobacco products coming from EU countries. To be raised on our excise number **001310E0010** corresponding to The address: MATHEZ - Avenue du 24 Aout - 06400 CANNES

C - Label each parcel as follow:

MATHEZ ONSITE / TFWA
Exhibiting company's Name / Stand Number / Color of Village



INTEGRATED EXPRESS TRANSPORT

The merchandise must arrive
« prepaid », in **Cannes from
October 18th to 22nd 2021.**

A copy of the shipping slip
must be e-mailed to
fandreazza@onsitefr.com It
will not be possible to trace the
shipment without it.

We kindly ask you to
return the attached **quote
request. (form page 20)**

FOR INTEGRATED EXPRESS TRANSPORT

We kindly ask you to:

A - Consign delivery slip to:

MATHEZ ONSITE
ESPLANADE DE LA PANTIERO
06400 CANNES FRANCE
TFWA / Exhibiting company's Name / Stand Number / Color of Village

B - Supply us with:

1°/ **Two pro-forma invoices**, for the merchandises coming from non
EU countries, addressed to:

EXHIBITING COMPANY's NAME
TFWA WE&C
PALAIS DES FESTIVALS
6400 CANNES, FRANCE

These two invoices will have to mention cargo content details:

- For the tobacco products: the quantity of unit, the net weight of pure tobacco, and the weight per unit.
- For the alcohol products: the quantity of unit, the content, the total litter of pure alcohol, the percentage of pure alcohol.

2°/ **Two packing-lists** detailing the content, gross and net weight,
volume of each parcel.

3°/ **Excise movement and control document or electronic transfer**
(AAD) for all alcohol and tobacco products coming from EU countries.
To be raised on our excise number **001310E0010** corresponding to the
address: MATHEZ - Avenue du 24 Aout - 06400 CANNES

C - Label each parcel as follow:

MATHEZ ONSITE / TFWA
Exhibiting company's Name / Stand Number / Color of Village

We will not be held responsible for any
delay, lost, or damage of merchandise
which will not be transported by ON SITE
and/or be left unsupervised on stand.

2 - PRODUCTS UNLOADING IN CANNES

The merchandises will be unloaded, on arrival in Cannes, by our team.

MATHEZ ONSITE will:

- check the quantity of parcels with the transport receipt
- check if there is any damage
- advise the sender in case of damage or parcel missing.

3 – CUSTOMS FORMALITIES

The Customs formalities will be done only for shipments coming from or going to a non-EU Country.

MATHEZ ONSITE will customs clear shipments on your behalf, once released by French customs, the goods will be ready to be delivered to the stand or shipped..

All types of Customs formalities are available:

- ATA carnet formality
- temporary importation formality
- final importation formality
- transit formality
- final exportation formality

For the final importation formality, **MATHEZ ONSITE will advance the payment of the eventual import taxes and duties to French Customs** and will invoice them to you at cost.

4 - STORING BEFORE THE EXHIBITION

The merchandises arriving in **Cannes from October 19th 2021**, will be unloaded and stored into MATHEZ ONSITE WAREHOUSE, Esplanade de la Pantière, 100 m away from the Palais des Festivals until delivered at once or partly on stand on **October 23rd and 24th 2021**. A cooled area is available for heat sensitive merchandise. **(map page 16)**



5 - DELIVERY ON STAND

We invite you to inform us as soon as possible of the date and time desired for the delivery of your merchandise to your stand, by email at fandreazza@onsitefr.com or via the **form page 21**.

6 - STORING DURING THE EXHIBITION

The remaining of partly delivered shipment, can be stored during the exhibition in the MATHEZ ONSITE WAREHOUSE to be delivered throughout the event.

Empty packagings can also be stored during the entire show with a restitution scheduled by organizers on Thursday October 28th from 5:30PM

Thank you to see directly with our teams on-site during the weekend of October 23rd and 24th to get the appropriate labels.

7 – RETURN TRANSPORT

A shipping instructions form will be dropped off at each stand **on October 27th 2021 after 6 PM**.

This form must be dully completed and returned to MATHEZ ONSITE staff when taking charge of your shipment at your stand

For final destination outside the European Union this form **must be returned along with** a proforma invoice and a packing list.

Each package must also be labeled with the recipient's final address and properly packaged to withstand handling and transportation.

At the end of the show, October 28th, 2021 17:30 MATHEZ ONSITE will make new boxes, additional shipping forms, labels etc... available to his clients at MATHEZ ONSITE meeting points (**maps pages 17 to 19**)

The packages removed from stand will be brought back and stored at MATHEZ ONSITE warehouse before they are removed by your carrier or shipped by MATHEZ ONSITE

Latest pick-up date by your carrier/forwarder: **Thursday November 3rd 2021**.

We strongly recommend that you **do not leave** your stand **before** MATHEZ ONSITE staff has collected your shipment. No merchandise should be left unattended during dismantling.

MATHEZ ONSITE LOGISTICS cannot be held responsible for the loss or theft of packages left unattended





ROAD TRANSPORT

The merchandise must arrive « prepaid », in **Cannes from October 18th to 24th 2021.**

We suggest you to join the **consolidated transportation**, organised from your country by ON SITE, through its network of agents, whose details will be provided on request. (**contacts page 22**)

We invite you to return the attached **quote request**. (**form page 20**)

We will not be held responsible for any delay, lost, or damage of merchandise which will not be transported by ON SITE and/or be left unsupervised on stand.

1 - TRANSPORT OF STAND EQUIPMENT FOR THE ROAD TRANSPORT

We kindly ask you to:

A - Consign transport document or CMR to:

MATHEZ ONSITE
ESPLANADE DE LA PANTIERO
06400 CANNES FRANCE

Ref.: TFWA / Exhibiting company's Name / Stand Number / Color of Village

B - Supply us with:

1°/ **Two pro-forma invoices**, for the merchandises coming from non EU countries, addressed to:

THE NAME OF THE EXHIBITING COMPANY
TFWA WE&C
PALAIS DES FESTIVALS
06400 CANNES, FRANCE

2°/ **Two packing-lists** detailing the content, gross and net weight, volume of each parcel.

C - Label each parcel as follow:

MATHEZ ONSITE / TFWA
Exhibiting company's Name / Stand Number / Color of Village

UNLOADING

Due to the large quantity of trucks, an **"unloading number"** with date and time of handling will be given to you by MATHEZ ONSITE. We advise you to contact us as soon as possible, by e-mailing **Mr. Stephane ROCHE** sroche@onsitefr.com

A representative of Tax Free will give a special label to driver when truck will arrive in the Parking de la Bocca (**map page 17**)

The trucks will come, by number, to be unloaded to the Palais des Festivals in Cannes.

Any truck coming directly to the Palais des Festivals in Cannes, without this special label, will be asked to return immediately to la Bocca.



AIR FREIGHT TRANSPORT

The merchandise must arrive **“DAP” from October 6th to 22nd 2021.**

The transport between Nice and Cannes will be done, daily, with our own trucks.

We suggest you to join the **consolidated transportation**, organised from your country by ON SITE, through its network of agents, whose details will be provided on request.
(contacts page 22)

We invite you to return the attached **quote request.**
(form page 20))

We will not be held responsible for any delay, lost, or damage of merchandise which will not be transported by ON SITE and/or be left unsupervised on stand.

FOR AIR FREIGHT TRANSPORT

We kindly ask you to:

A - Consign A.W.B (airway bill) to:

MATHEZ ONSITE LOGISTICS

06200 – AEROPORT NICE COTE D'AZUR – FRANCE

Notify : TFWA / Exhibiting company's Name / Stand Number / Color of Village

B - Supply us with:

1°/ **Two pro-forma invoices**, for the merchandises coming from non EU countries, addressed to:

THE NAME OF THE EXHIBITING COMPANY

TFWA WE&C

PALAIS DES FESTIVALS

06400 CANNES, FRANCE

2°/ **Two packing-lists** detailing the content, gross & net weight and volume of each parcel.

C - Label each parcel as follow:

MATHEZ ONSITE / TFWA

Exhibiting company's Name /Stand Number / Color of Village



OCEAN FREIGHT SHIPMENT

The merchandise must arrive
“DAP Cannes” from October
18th to 24th 2021.

The port of destination will be:
Marseille or Fos.

The bill of lading must be on
«**express release**» basis and
a copy must be e-mailed to:
cluchague@onsitefr.com. It
will be impossible to
trace the shipment without this
copy.

We suggest you to join the
consolidated transportation,
organised from your country
by ON SITE, through its
network of agents, whose
details will be provided on
request.
(contacts page 22)

We invite you to
return the attached **quote
request**. **(form page 20)**

FOR OCEAN FREIGHT TRANSPORT

We kindly ask you to:

A - Consign Bill of Lading (B/L) to:

MATHEZ ONSITE

ESPLANADE DE LA PANTIERO 06400 CANNES FRANCE

Notify : TFWA / Exhibiting company's Name / Stand Number / Color of Village

B - Supply us with:

1°/ **Two pro-forma invoices**, for the merchandises coming from non EU
countries, addressed to:

THE NAME OF THE EXHIBITING COMPANY

TFWA WE&C

PALAIS DES FESTIVALS

06400 CANNES, FRANCE

2°/ **Two packing-lists** detailing the content, gross and net weight, volume of
each parcel.

C - Label each parcel as follow:

MATHEZ ONSITE / TFWA

Exhibiting company's Name /Stand Number / Color of Village



INTEGRATED EXPRESS TRANSPORT

The merchandise must arrive
« prepaid », **in Cannes from
October 18th to 22nd 2021.**

A copy of the shipping slip
must be e-mailed to
sroche@onsitefr.com.

It will not be possible to trace
the shipment without it.

We invite you to
return the attached **quote
request. (form page 20)**

FOR INTEGRATED EXPRESS TRANSPORT

We kindly ask you to:

A - Consign delivery slip to :

MATHEZ ONSITE LOGISTICS
ESPLANADE DE LA PANTIERO
06400 CANNES FRANCE

TFWA / Exhibiting company's Name / Stand Number / Color of Village

B - Supply us with:

1°/ **Two pro-forma invoices**, for the merchandises coming from non
EU countries, addressed to:

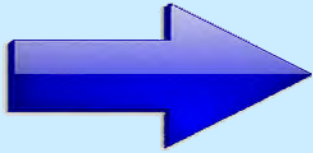
THE NAME THE EXHIBITING COMPANY
TFWA WE&C
PALAIS DES FESTIVALS
06400 CANNES FRANCE

2°/ **Two packing-lists** detailing the content, gross and net weight, volume of
each parcel.

C - Label each parcel as follow:

MATHEZ ONSITE / TFWA
Exhibiting company's Name /Stand Number / Color of Village

We will not be held responsible for any
delay, lost, or damage of merchandise
which will not be transported by ON SITE
and/or be left unsupervised on stand.



2 - UNLOADING AND DELIVERY OF THE STAND EQUIPMENT

Stand equipment will be unloaded with our own forklifts and delivered by our own team to each stand location, following the indication marked on the labels, **from October 19th 2021**. We advise you to use strong packaging such as wooden crates or pallets to avoid damage or delivery delay – we won't handle bulk material.

Due to the large quantity of trucks, an “**unloading number**” with date and time of handling will be given to you by MATHEZ ONSITE, according to your needs and our availability. Contact us at your earliest convenience

Att: M. Stéphane ROCHE - sroche@onsitefr.com

3 – CUSTOMS FORMALITIES

The Customs formalities will be done only for the stand equipment coming from or going to a non-EU Country.

MATHEZ ONSITE will customs clear the shipment with a pro-forma invoice, once released by French Customs, stand equipment will be ready for delivery on stand, or for shipping.

All types of Customs formalities are available:

- ATA carnet formality
- temporary importation formality
- final importation formality
- transit formality
- final exportation formality

For the final importation formality, MATHEZ ONSITE will **advance the payment of any import duties and taxes** to French Customs and invoice you for them at cost price.

4 - THE STORAGE OF THE EMPTIES

The “**empty storage**” labels will be given to you upon delivery of your equipment to the stand. They must be stuck on each parcel once empty.

MATHEZ ONSITE will then collect the empty packages to store and return them back to stand at the end of the event on **October 29th 2021 before 6.00 am**.

MATHEZ ONSITE LOGISTICS won't be liable for any goods left in empty packages.

We will not be held responsible for any delay, lost, or damage of merchandise which will not be transported by ON SITE and/or be left unsupervised on stand.

5 - THE RETURN TRANSPORT OF STAND EQUIPMENT

Shipping instructions form and blank labels will be available at our MATHEZ ONSITE WAREHOUSE, from **October 29th 2021 7.00 am.** (see map p16)

For final destination outside the European Union this form must be returned, dully filled along with a proforma invoice and a packing list to MATHEZ ONSITE LOGISTICS staff during the collect on stand.

Each package must be labeled with the final consignee address and properly packaged to withstand handling and transportation..

6 – ANNUAL STORAGE

We inform you that the stand equipment can be stored in our warehouse in Nice until any future exhibition. A quote on request.

Our warehouse is located near Nice and is fully protected by alarm and video systems.

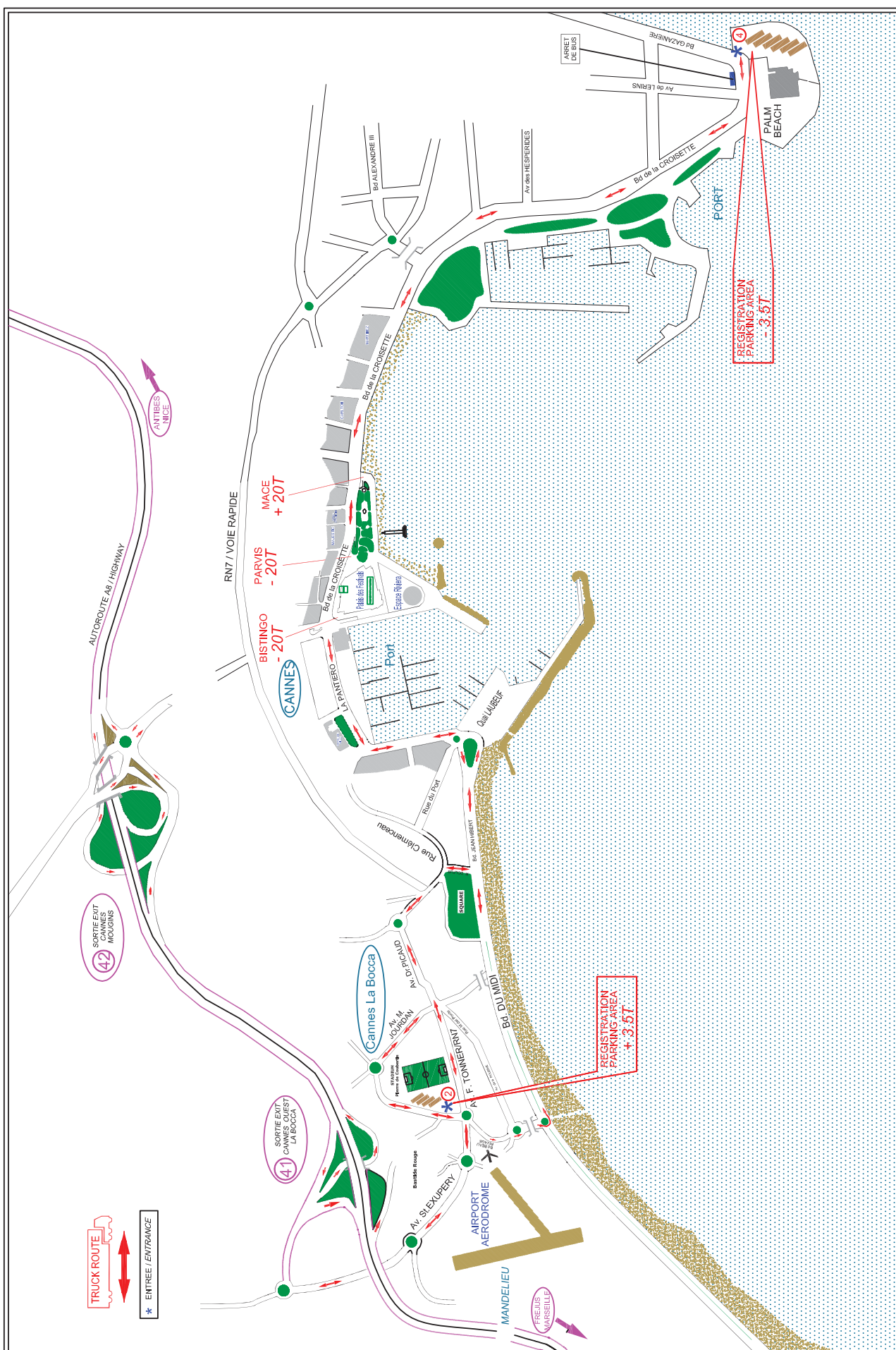
The non-EU country stand equipment can also be stored in our “bonded area”, without paying French VAT and duties.

The stored stand material will be systematically insured at its declared value.

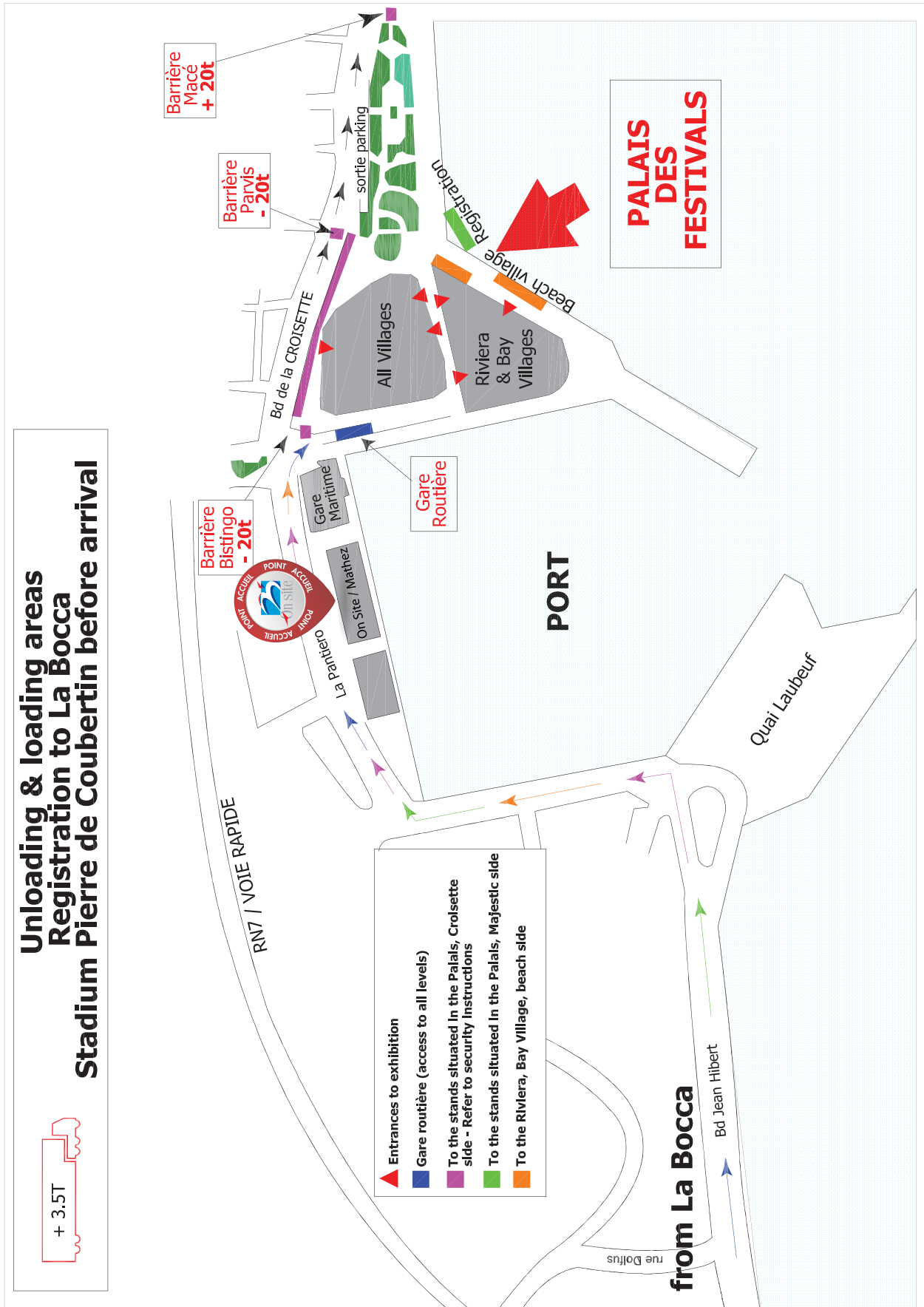
We will not be held responsible for any delay, lost, or damage of merchandise which will not be transported by ON SITE and/or be left unsupervised on stand.

ACCESS MAP TO LA BOCCA PARKING

ACCESS PLAN FROM A8 TO PALAIS DES FESTIVALS / PLAN D'ACCES DE L'A8 AU PALAIS DES FESTIVALS



ON SITE / MATHEZ WAREHOUSE
ESPLANADE DE LA PANTIERO
06400 CANNES, France

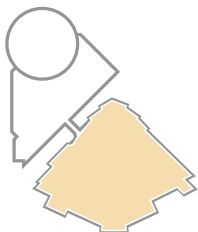
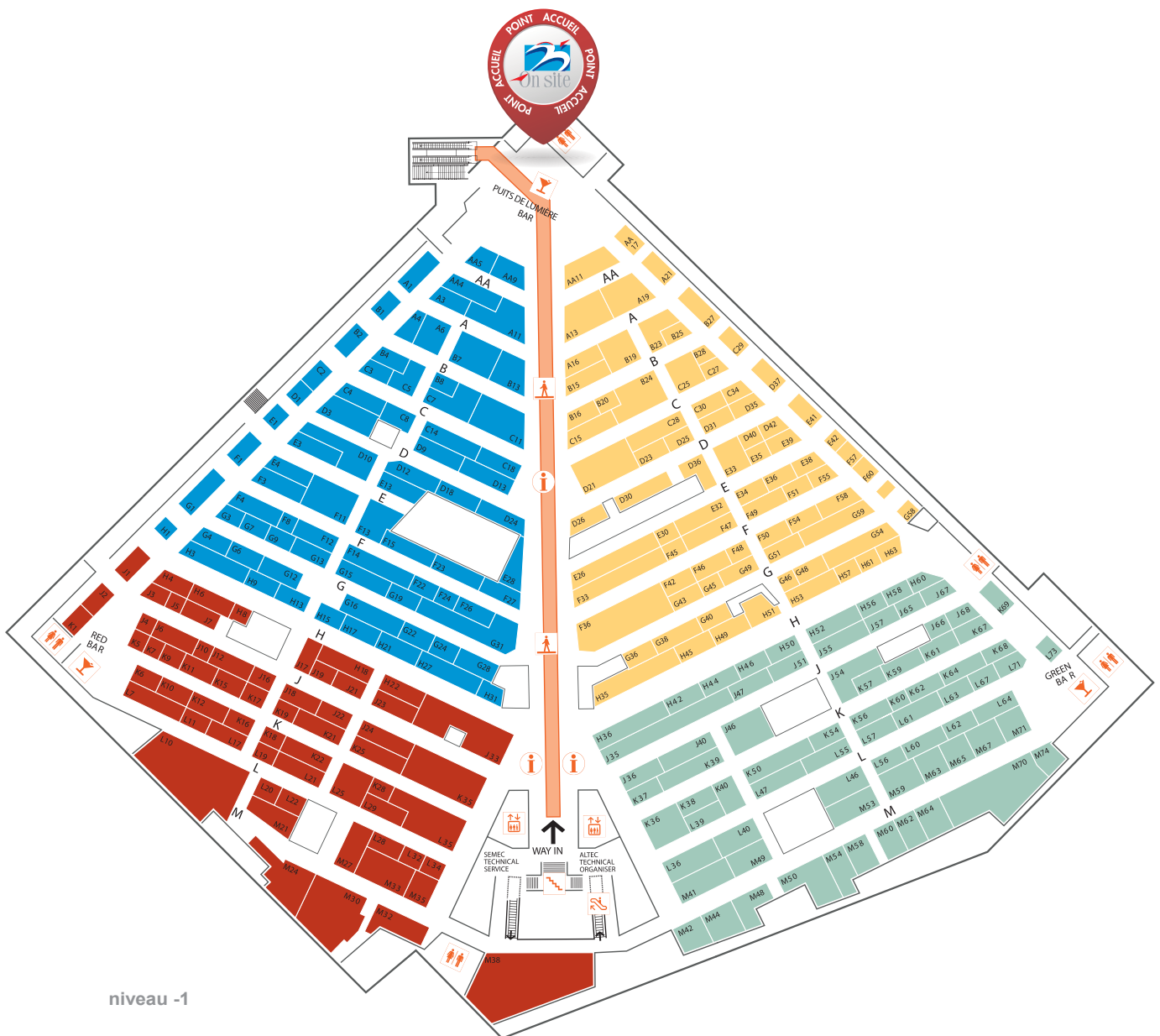


ACCESS MAP TO ON SITE MEETING POINT - 1/3

« Yellow », « Blue », « Red » & « Green » Villages

ON SITE meeting point: Puits de lumière

At the end of the exhibition October 4th 2019 starting at noon, ONSITE will supply new cardboard boxes, labels, packing material and additional shipping instructions form

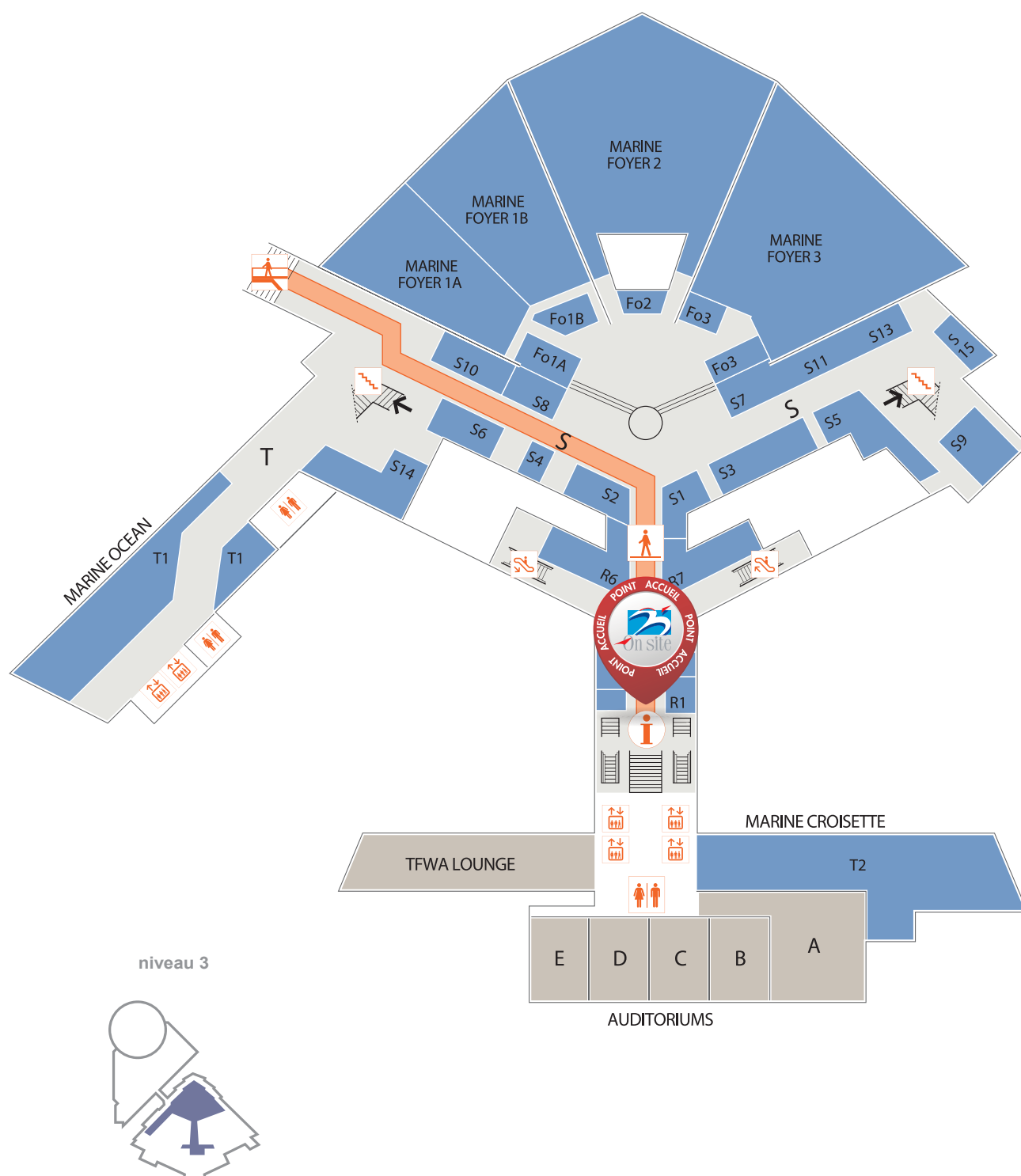


ACCESS MAP TO ON SITE MEETING POINT - 2/3

« Marine », « Golden », « Ambassadeurs » & « Terrasses 5e étage » Villages

ON SITE meeting point: 3rd level

At the end of the exhibition October 4th 2019 starting at noon, ONSITE will supply new cardboard boxes, labels, packing material and additional shipping instructions form

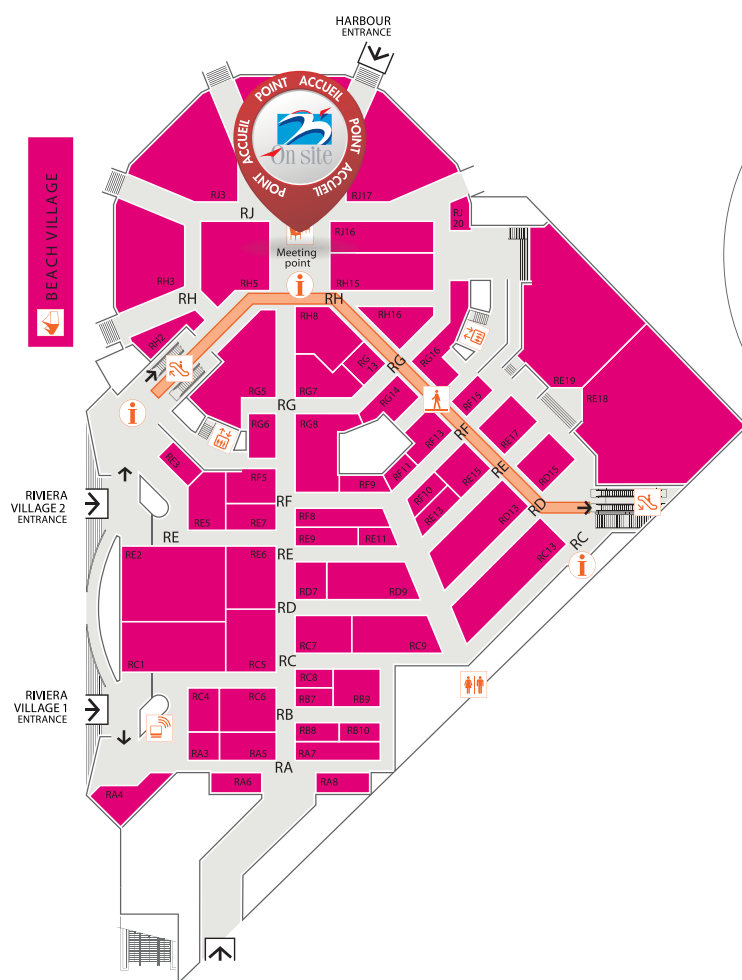


ACCESS MAP TO ON SITE MEETING POINT - 3/3

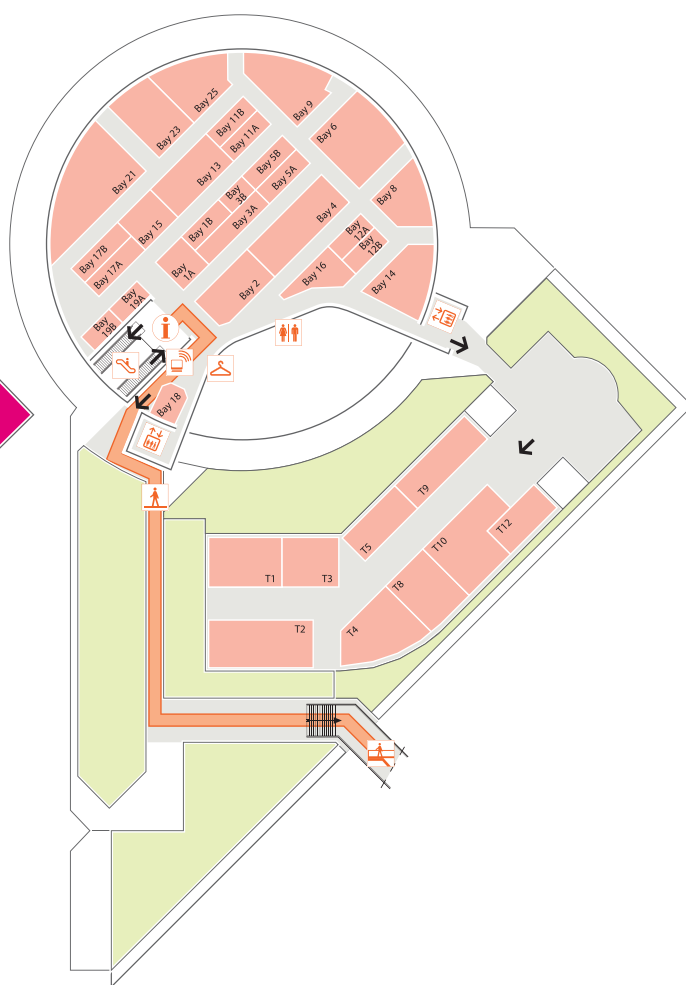
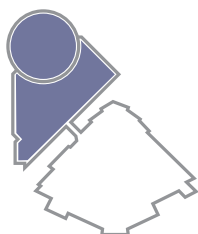
« Riviera », « Méditerranée », « Rotonde » « Lerins » & « Bay » Villages

ON SITE meeting point: Riviera village

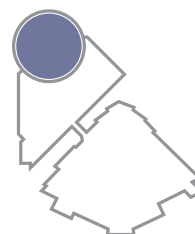
At the end of the exhibition October 4th 2019 starting at noon, ONSITE will supply new cardboard boxes, labels, packing material and additional shipping instructions form



niveau 0



niveau 1



HANDLING QUOTE REQUEST FORM

Online form available through

<http://www.info.onsitefr.com/fr/annexes/demande-de-cotation.html>

Fill in and return to ccluchague@onsitefr.com - Att: Mme Céline CLUCHAGUE

copy: sroche@onsitefr.com; fandreazza@onsitefr.com;

You are ?

☐ Exhibitor

☐ Stand Contractor

SENDER

Company Name :

Address 1 :

Zip Code :

City :

Country :

Phone :

E-mail :

Contact :

COMMODITY

Inbound transport mean :

☐ Air

☐ Route

☐ Mer

☐ Transport Express

Product type :

☐ Stands

☐ Produits

Packing type :

Customs value :

Number of pieces :

Total volume m³ :

or dimensions :

Total weight kg :

STAND DELIVERY REQUEST FORM

Online form available through:

<http://www.info.onsitefr.com/fr/annexes/rendez-vous-sur-stand.html>

Fill up and email to fandreazza@onsitefr.com; - Att: M. Francis ANDREAZZA

Exhibiting company's name
& village/ stand's number:

.....

Requested stand delivery
date and app. time:

.....

Details if partial delivery needed:

[illegible]



MATHEZ ONSITE LOGISTICS

1ère Avenue
le Broc Center
Bat. A - Lot 4
06510 Carros France

Tél: +(33) 04 93 29 80 16
Fax : +(33) 04 93 29 91 30

E-mails contacts

Mrs Céline CLUCHAGUE : ccluchague@onsitefr.com
M. Francis ANDREAZZA : fandreazza@onsitefr.com
M. Stéphane ROCHE: sroche@onsitefr.com

VAT number: FR 37 955 803 929

Excise number: FR001310E0010

To ease your participation in this show ONSITE suggests you to join the **consolidated transport** organised from your country, through its network of agents, whose details will be provided on demand