



**Official Handling Agent, Forwarder
& Customs Broker**

**TFWA World Exhibition & Conference
From October 2nd to October 6th 2022**

EXHIBITORS

1 - THE TRANSPORT OF THE PRODUCTS	3
Air freight Transport	3
Road Transport	4
Integrated Express Transport	5
2 - UNLOADING IN CANNES	6
3 - CUSTOMS FORMALITY	6
4 - STORING BEFORE THE EXHIBITION	6
5 - DELIVERY ON STAND	7
6 - STORING DURING THE EXHIBITION	7
7 - RETURN TRANSPORT	7

STAND CONTRACTORS

1 - TRANSPORT OF THE STAND EQUIPMENT	8
Road Transport	8
Airfreight Transport	9
Integrated Express Transport	10
2 - UNLOADING AND DELIVERY OF THE STAND EQUIPMENT	11
3 - CUSTOMS FORMALITY	11
4 - STORAGE OF THE EMPTIES	11
5 - RETURN TRANSPORT OF THE STAND EQUIPMENT	12
6 - ANNUAL STORAGE	12

ANNEXES

Access Map to la Bocca Parking	13
Access Map to ONSITE / MATHEZ Warehouse	14
Access Map to ONSITE Meeting Point - 1/3	
“Blue”, “Yellow”, “Red” and “Green” villages	15
Access Map to ONSITE Meeting Point - 2/3	
“Marine”, “Golden”, “Ambassadeurs” and “Terrasses 5e étage”	16
villages Access Map to ONSITE Meeting Point - 3/3	
“Riviera”, “Méditerranée”, “Rotonde”, “Lerins” and “Bay” villages	17
Handling Quote Request Form	18
Delivery on Stand Request Form	19

CONTACT DETAILS



AIR FREIGHT TRANSPORT

Since January 2022, France has changed its legislation about import taxes.

Now **all importers**, French and Foreigners must be registered in France to have a french VAT number and use the reverse charge mechanism.

Meaning instead of paying import taxes and duties to French Customs via our services, importers have to declare their import taxes on their own french monthly taxes return in order to pay it but still need to use our services for the import duties and the formalities.

We, as Customs brokers, are not allowed to use/lend our own registration number (VAT#) to do it on behalf of importers.

The merchandise must arrive «CIF Nice», **at Nice Airport from September 7th to 28th 2022.**

The transport between Nice and Cannes will be done, daily, with our own trucks.

A copy of the AWB must be emailed to **ccluchague@mathez-onsite-logistics.com** to trace the shipment.

*We invite you to return the attached quote request.
(form page 20)*

We will not be held responsible for any delay, lost, or damage of merchandise which will not be transported by ONSITE and/or be left unsupervised on stand.

1 - TRANSPORT OF PRODUCTS FOR THE AIR FREIGHT TRANSPORT

We kindly ask you to:

A - Consign Prepaid A.W.B (airway bill) to:

MATHEZ ONSITE

06200 - AEROPORT NICE COTE D'AZUR - FRANCE

Notify: TFWA / Exhibiting company's Name / Stand Number / Color of Village

B - For cargo requiring customs clearance supply us with:

1°/ **Two pro-forma invoices**, for the merchandises coming from non EU countries, addressed to:

EXHIBITING COMPANY's NAME

TFWA WE&C

PALAIS DES FESTIVALS

6400 CANNES, FRANCE

your FR VAT # _____

your EU EORI # _____

These two invoices will have to mention cargo content details:

- For the tobacco products: the quantity of unit, the net weight of pure tobacco, and the weight per unit.
- For the alcohol products: the quantity of unit, the content, the total litter of pure alcohol, the percentage of pure alcohol.

2°/ **Two packing-list** detailing the content, gross and net weight, volume of each parcel.

3°/ **Excise movement and control document or electronic transfer (AAD)** for all alcohol and tobacco products coming from EU countries.

To be raised on our excise number **001310E0010** corresponding to the address: MATHEZ - Avenue du 24 Aout - 06400 CANNES

C - Label each parcel as follow:

MATHEZ ONSITE / TFWA

Exhibiting company's Name / Stand Number / Color of Village



ROAD TRANSPORT

Since January 2022, France has changed its legislation about import taxes.

Now **all importers**, French and Foreigners must be registered in France to have a french VAT number and use the reverse charge mechanism.

Meaning instead of paying import taxes and duties to French Customs via our services, importers have to declare their import taxes on their own french monthly taxes return in order to pay it but still need to use our services for the import duties and the formalities.

We, as Customs brokers, are not allowed to use/lend our own registration number (VAT#) to do it on behalf of importers.

The merchandise must arrive «prepaid», **in Cannes from September 27th to October 2nd 2022**.

We suggest you to join the **consolidated transportation**, organised from your country by MATHEZ ONSITE, through its network of agents, whose details will be provided on request.
(contacts page 22)

We invite you to return the attached **quote request**.
(form page 20)

We will not be held responsible for any delay, lost, or damage of merchandise which will not be transported by ONSITE and/or be left unsupervised on stand.

FOR THE ROAD TRANSPORT

We kindly ask you to:

A - Consign Prepaid transport document or CMR to:

MATHEZ ONSITE

ESPLANADE DE LA PANTIERO

06400 CANNES FRANCE

TFWA / Exhibiting company's Name / Stand Number / Color of Village

B - For cargo requiring customs clearance supply us with:

1°/ **Two pro-forma invoices**, for the merchandises coming from non EU countries, addressed to:

EXHIBITING COMPANY's NAME

TFWA WE&C

PALAIS DES FESTIVALS

6400 CANNES, FRANCE

your FR VAT # _____

your EU EORI # _____

These two invoices will have to mention cargo content details:

- For the tobacco products: the quantity of unit, the net weight of pure tobacco, and the weight per unit.
- For the alcohol products: the quantity of unit, the content, the total litter of pure alcohol, the percentage of pure alcohol.

2°/ **Two packing-lists** detailing the content, gross & net weight and volume of each parcel.

3°/ **Excise movement and control document or electronic transfer (AAD)** for all alcohol and tobacco products coming from EU countries.

To be raised on our excise number **001310E0010** corresponding to the address: MATHEZ - Avenue du 24 Aout - 06400 CANNES

C - Label each parcel as follow:

MATHEZ ONSITE / TFWA

Exhibiting company's Name / Stand Number / Color of Village



INTEGRATED EXPRESS TRANSPORT

Since January 2022, France has changed its legislation about import taxes.

Now all importers, French and Foreigners must be registered in France to have a french VAT number and use the reverse charge mechanism .

Meaning instead of paying import taxes and duties to French Customs via our services, importers have to declare their import taxes on their own french monthly taxes return in order to pay it but still need to use our services for the import duties and the formalities.

We, as Customs brokers, are not allowed to use/lend our own registration number (VAT#) to do it on behalf of importers

The merchandise must arrive "prepaid - DDP Cannes", in Cannes from September 27th to 30th 2022.

A copy of the shipping slip must be e-mailed to fandreazza@mathez-onsite-logistics.com to trace the shipment.

We kindly ask you to return the attached **quote request**. (form page 20)

We will not be held responsible for any delay, lost, or damage of merchandise which will not be transported by ON SITE and/or be left unsupervised on stand.

FOR INTEGRATED EXPRESS TRANSPORT

We kindly ask you to:

A - Consign delivery slip to:

EXHIBITING COMPANY's NAME

P/C MATHEZ ONSITE

ESPLANADE DE LA PANTIERO

06400 CANNES FRANCE

TFWA / Exhibiting company's Name / Stand Number / Color of Village

B - For cargo requiring customs clearance supply us with:

1°/ **Two pro-forma invoices**, for the merchandises coming from non EU countries, addressed to:

EXHIBITING COMPANY's NAME

TFWA WE&C

PALAIS DES FESTIVALS

6400 CANNES, FRANCE

your FR VAT # _____

your EU EORI # _____

These two invoices will have to mention cargo content details:

- For the tobacco products: the quantity of unit, the net weight of pure tobacco, and the weight per unit.
- For the alcohol products: the quantity of unit, the content, the total litter of pure alcohol, the percentage of pure alcohol.

2°/ **Two packing-lists** detailing the content, gross and net weight, volume of each parcel.

3°/ **Excise movement and control document or electronic transfer** (AAD) for all alcohol and tobacco products coming from EU countries. To be raised on our excise number **001310E0010** corresponding to the address: MATHEZ - Avenue du 24 Aout - 06400 CANNES

C - Label each parcel as follow:

MATHEZ ONSITE / TFWA

Exhibiting company's Name / Stand Number / Color of Village



**** Since January 2022, France has changed its legislation about import taxes. Now all importers, French and Foreigners must be registered in France to have a french VAT number and use the reverse charge mechanism .**

Meaning instead of paying import taxes and duties to French Customs via our services, importers have to declare their import taxes on their own french monthly taxes return in order to pay it but still need to use our services for the import duties and the formalities.

We, as Customs brokers, are not allowed to use/lend our own registration number (VAT#) to do it on behalf of importers

2 - PRODUCTS UNLOADING IN CANNES

The merchandises will be unloaded, on arrival in Cannes, by our team.

MATHEZ ONSITE will:

- check the quantity of parcels with the transport receipt
- check if there is any damage
- advise the sender in case of damage or parcel missing.

3 – CUSTOMS FORMALITIES

The Customs formalities will be done only for shipments coming from or going to a non-EU Country.

MATHEZ ONSITE will customs clear shipments on your behalf, once released by French customs, the goods will be ready to be delivered to the stand or shipped..

All types of Customs formalities are available:

- ATA carnet formality
- temporary importation formality
- permanent importation formality
- transit formality
- final exportation formality

For the Permanent importation , **MATHEZ ONSITE will advance the payment of the eventual import duties to French Customs** and will invoice them to you at cost. Whereas the import taxes will be communicated to you so you can declare it on your french VAT tax return.

4 - STORING BEFORE THE EXHIBITION

The merchandises arriving in **Cannes from September 27th 2022**, will be unloaded and stored into MATHEZ ONSITE WAREHOUSE, Esplanade de la Pantière, 100 m away from the Palais des Festivals until delivered at once or partly on stand on **October 1st and 2nd 2022**. A cooled area is available for heat sensitive merchandise. **(map page 16)**



5 - DELIVERY ON STAND

We invite you to inform us as soon as possible of the date and time desired for the delivery of your merchandise to your stand, by email at fandreazza@onsitefr.com or via the **form page 21**.

6 - STORING DURING THE EXHIBITION

The remaining of partly delivered shipment, can be stored during the exhibition in the MATHEZ ONSITE WAREHOUSE to be delivered throughout the event.

Empty packagings can also be stored during the entire show with a restitution scheduled by organizers on **Thursday October 6th from 5:30PM**

Thank you to see directly with our teams on-site during the weekend of October 1st and 2nd to get the appropriate labels.



7 – RETURN TRANSPORT

A shipping instructions form will be dropped off at each stand **on October 5th 2022 after 6 PM**.

This form must be dully completed and handed to MATHEZ ONSITE staff when taking charge of your shipment at your stand.

For final destination outside the European Union this form **must be returned along with** a proforma invoice and a packing list.

Each package must also be labeled with the recipient's final address and properly packaged to withstand handling and transportation.

At the end of the show, **October 6th, 2022 17:30** MATHEZ ONSITE will make new boxes, additional shipping forms, labels etc... available to his clients at MATHEZ ONSITE meeting points (**maps pages 17 to 19**)

The packages removed from stand will be brought back and stored at MATHEZ ONSITE warehouse before being removed by your carrier or shipped by MATHEZ ONSITE.

Latest pick-up date by your carrier/forwarder: **Wednesday October 12th 2022**.

We strongly recommend that you **do not leave** your stand **before** MATHEZ ONSITE staff has collected your shipment.

No merchandise should be left unattended during dismantling. MATHEZ ONSITE LOGISTICS cannot be held responsible for the loss or theft of packages left unattended

We will not be held responsible for any delay, lost, or damage of merchandise which will not be transported by ON SITE and/or be left unsupervised on stand.



ROAD TRANSPORT

Since January 2022, France has changed its legislation about import taxes.

Now all importers, French and Foreigners must be registered in France to have a french VAT number and use the reverse charge mechanism .

Meaning instead of paying import taxes and duties to French Customs via our services, importers have to declare their import taxes on their own french monthly taxes return in order to pay it but still need to use our services for the import duties and the formalities.

We, as Customs brokers, are not allowed to use/lend our own registration number (VAT#) to do it on behalf of importers

The merchandise must arrive « prepaid », **in Cannes from October 26th to 30th 2022.**

We suggest you to join the **consolidated transportation**, organised from your country by MATHEZ ONSITE, through its network of agents, whose details will be provided on request. **(contacts page 22)**

We invite you to return the attached **quote request. (form page 20)**

We will not be held responsible for any delay, lost, or damage of merchandise which will not be transported by ON SITE and/or be left unsupervised on stand.

1 - TRANSPORT OF STAND EQUIPMENT FOR THE ROAD TRANSPORT

We kindly ask you to:

A - Consign Prepaid transport document or CMR to:

MATHEZ ONSITE

ESPLANADE DE LA PANTIERO

06400 CANNES FRANCE

Ref.: TFWA / Exhibiting company's Name / Stand Number / Color of Village

B - For cargo requiring customs clearance supply us with:

1°/ **Two pro-forma invoices**, addressed to:

EXHIBITING COMPANY's NAME

TFWA WE&C

PALAIS DES FESTIVALS

6400 CANNES, FRANCE

your FR VAT # _____

your EU EORI # _____

2°/ **Two packing-lists** detailing the content, gross and net weight, volume of each parcel.

C - Label each parcel as follow:

MATHEZ ONSITE / TFWA

Exhibiting company's Name /Stand Number / Color of Village

UNLOADING

Due to the large quantity of trucks, an **“unloading number”** with date and time of handling will be given to you by MATHEZ ONSITE. We advise you to contact us as soon as possible, by e-mailing **Mr. Stephane ROCHE** sroche@onsitefr.com

A representative of Tax Free will give a special label to driver when truck will arrive in the Parking de la Bocca **(map page 17)**

The trucks will come, by number, to be unloaded to the Palais des Festivals in Cannes.

Any truck coming directly to the Palais des Festivals in Cannes, without this special label, will be asked to return immediately to la Bocca.



AIR FREIGHT TRANSPORT

Since January 2022, France has changed its legislation about import taxes.

Now all importers, French and Foreigners must be registered in France to have a french VAT number and use the reverse charge mechanism .

Meaning instead of paying import taxes and duties to French Customs via our services, importers have to declare their import taxes on their own french monthly taxes return in order to pay it but still need to use our services for the import duties and the formalities.

We, as Customs brokers, are not allowed to use/lend our own registration number (VAT#) to do it on behalf of importers

The merchandise must arrive “**CIF Nice**” from **October 7th to 2, th 2022.**

The transport between Nice and Cannes will be done, daily, with our own trucks.

A copy of the A.W.B must be e-mailed to sroche@mathez-onsite-logistics.com to trace the shipment.

We invite you to return the attached **quote request**. (**form page 20**))

We will not be held responsible for any delay, lost, or damage of merchandise which will not be transported by ON SITE and/or be left unsupervised on stand.

FOR AIR FREIGHT TRANSPORT

We kindly ask you to:

A - Consign A.W.B (airway bill) to:

MATHEZ ONSITE LOGISTICS

06200 – AEROPORT NICE COTE D'AZUR – FRANCE

Notify : TFWA / Exhibiting company's Name / Stand Number / Color of Village

B - For cargo requiring customs clearance supply us with:

1°/ **Two pro-forma invoices**, for the merchandises coming from non EU countries, addressed to:

EXHIBITING COMPANY's NAME

TFWA WE&C

PALAIS DES FESTIVALS

6400 CANNES, FRANCE

your FR VAT # _____

your EU EORI # _____

2°/ **Two packing-lists** detailing the content, gross & net weight and volume of each parcel.

C - Label each parcel as follow:

MATHEZ ONSITE / TFWA

Exhibiting company's Name /Stand Number / Color of Village



INTEGRATED EXPRESS TRANSPORT

Since January 2022, France has changed its legislation about import taxes.

Now all importers,

French and Foreigners must be registered in France to have a french VAT number and use the reverse charge mechanism .

Meaning instead of paying import taxes and duties to French Customs via our services, importers have to declare their import taxes on their own french monthly taxes return in order to pay it but still need to use our services for the import duties and the formalities.

We, as Customs brokers, are not allowed to use/lend our own registration number (VAT#) to do it on behalf of importers

The merchandise must arrive "DDP", in Cannes from October 27th to 30th 2022.

A copy of the shipping slip must be e-mailed to sroche@mathez-onsite-logistics.com to trace the shipment.

We invite you to return the attached **quote request**. (form page 20)

We will not be held responsible for any delay, lost, or damage of merchandise which will not be transported by ON SITE and/or be left unsupervised on stand.

FOR INTEGRATED EXPRESS TRANSPORT

We kindly ask you to:

A - Consign delivery slip to :

EXHIBITING COMPANY's NAME

C/O MATHEZ ONSITE

ESPLANADE DE LA PANTIERO

06400 CANNES FRANCE

TFWA / Exhibiting company's Name / Stand Number / Color of Village

B - For cargo requiring customs clearance supply us with:

1°/ **Two pro-forma invoices**, for the merchandises coming from non EU countries, addressed to:

EXHIBITING COMPANY's NAME

TFWA WE&C

PALAIS DES FESTIVALS

6400 CANNES, FRANCE

your FR VAT # _____

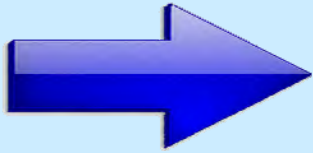
your EU EORI # _____

2°/ **Two packing-lists** detailing the content, gross and net weight, volume of each parcel.

C - Label each parcel as follow:

MATHEZ ONSITE / TFWA

Exhibiting company's Name /Stand Number / Color of Village



2 - UNLOADING AND DELIVERY OF THE STAND EQUIPMENT

Stand equipment will be unloaded with our own forklifts and delivered by our own team to each stand location, following the indication marked on the labels, **from October 19th 2021**. We advise you to use strong packaging such as wooden crates or pallets to avoid damage or delivery delay – we won't handle bulk material.

Due to the large quantity of trucks, an “**unloading number**” with date and time of handling will be given to you by MATHEZ ONSITE, according to your needs and our availability. Contact us at your earliest convenience
Att: M. Stéphane ROCHE - sroche@mathez-onsite-logistics.com

3 – CUSTOMS FORMALITIES

**** Since January 2022, France has changed its legislation about import taxes. Now all importers, French and Foreigners must be registered in France to have a french VAT number and use the reverse charge mechanism .**

Meaning instead of paying import taxes and duties to French Customs via our services, importers have to declare their import taxes on their own french monthly taxes return in order to pay it but still need to use our services for the import duties and the formalities.

We, as Customs brokers, are not allowed to use/lend our own registration number (VAT#) to do it on behalf of importers

The Customs formalities will be done only for the stand equipment coming from or going to a non-EU Country.

MATHEZ ONSITE will customs clear the shipment with a pro-forma invoice, once released by French Customs, stand equipment will be ready for delivery on stand, or for shipping.

All types of Customs formalities are available:

- ATA carnet formality
- temporary importation formality
- final importation formality
- transit formality
- final exportation formality

For the Permanent importation , **MATHEZ ONSITE will advance the payment of the eventual import duties to French Customs** and will invoice them to you at cost. Whereas the import taxes will be communicated to you so **you can declare it** on your french VAT tax return.

4 - THE STORAGE OF THE EMPTIES

The “**empty storage**” labels will be given to you upon delivery of your equipment to the stand. They must be stuck on each parcel once empty.

MATHEZ ONSITE will then collect the empty packages to store and return them back to stand at the end of the event on **October 7th 2022 before 6.00 am**.

MATHEZ ONSITE LOGISTICS won't be liable for any goods left in empty packages.

We will not be held responsible for any delay, lost, or damage of merchandise which will not be transported by ON SITE and/or be left unsupervised on stand.

5 - THE RETURN TRANSPORT OF STAND EQUIPMENT

Shipping instructions form and blank labels will be available at our MATHEZ ONSITE WAREHOUSE, from **October 7th 2022 7.00 am**. (see map p16)

For final destination outside the European Union this form must be returned, dully filled along with a proforma invoice and a packing list to MATHEZ ONSITE LOGISTICS staff during the collect on stand.

Each package must be labeled with the final consignee address and properly packaged to withstand handling and transportation..

6 – ANNUAL STORAGE

We inform you that the stand equipment can be stored in our warehouse in Nice until any future exhibition. A quote on request.

Our warehouse is located near Nice and is fully protected by alarm and video systems.

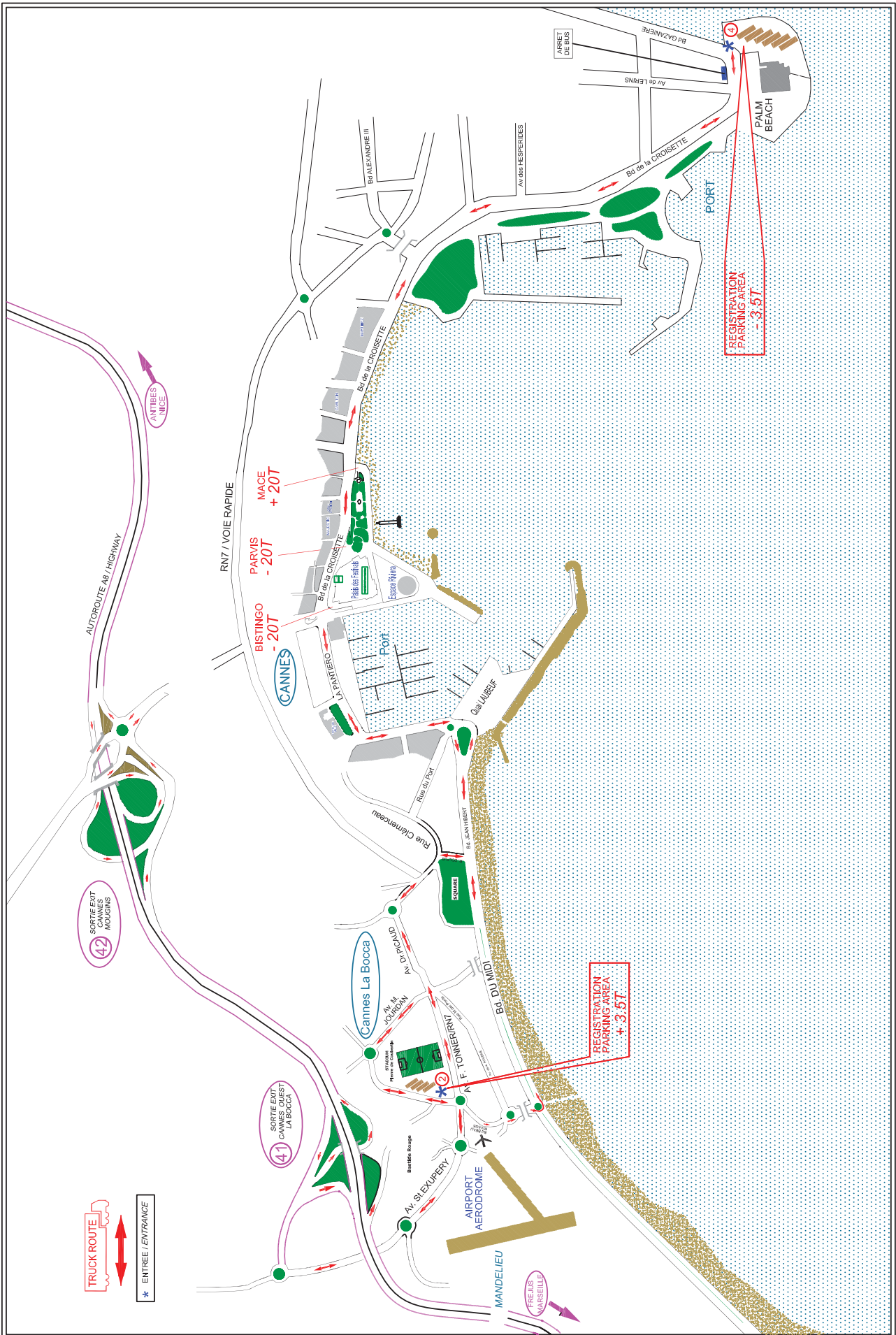
The non-EU country stand equipment can also be stored in our “bonded area”, without paying French VAT and duties.

The stored stand material will be systematically insured at its declared value.

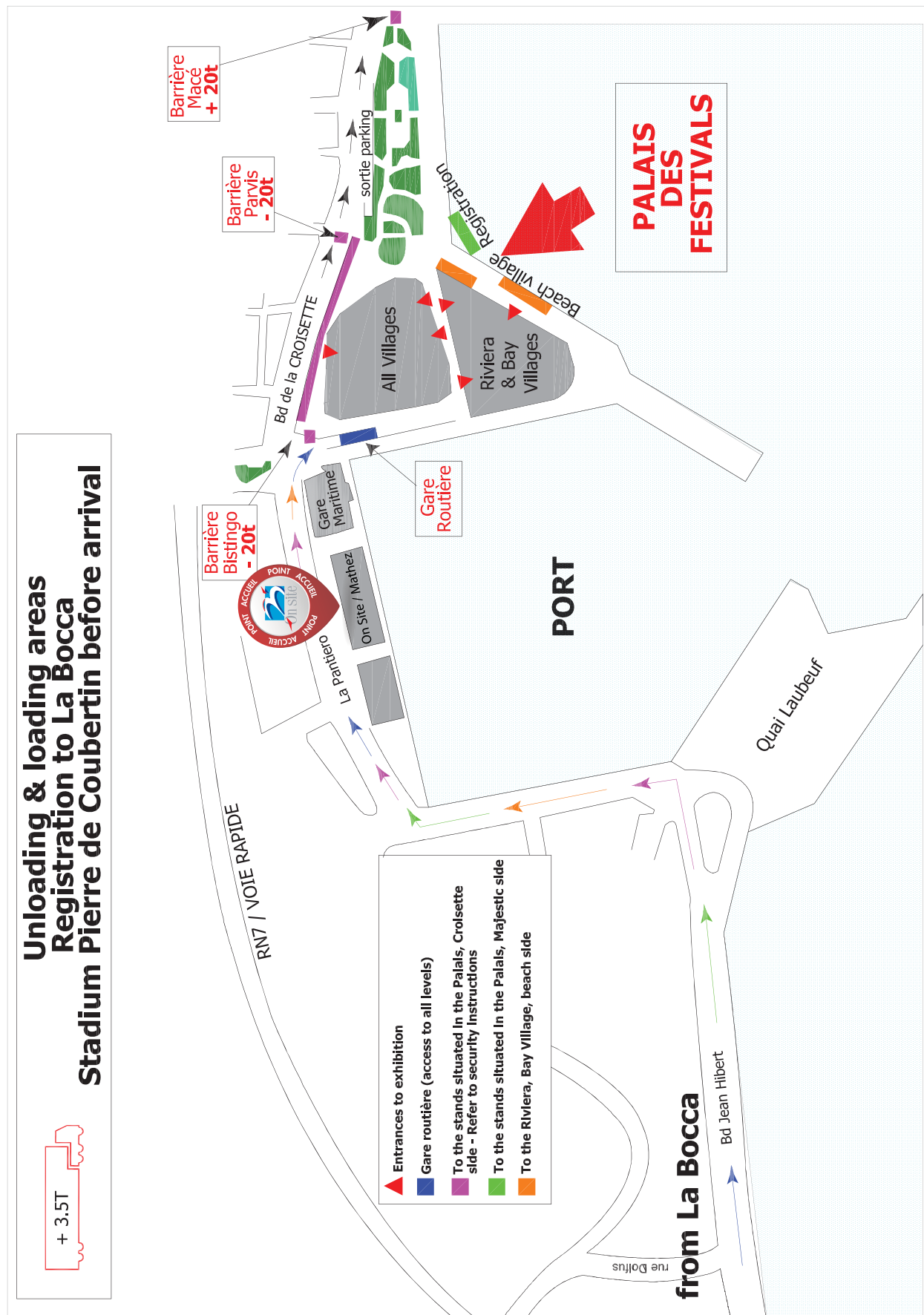
We will not be held responsible for any delay, lost, or damage of merchandise which will not be transported by ON SITE and/or be left unsupervised on stand.

ACCESS MAP TO LA BOCCA PARKING

ACCESS PLAN FROM A8 TO PALAIS DES FESTIVALS / PLAN D'ACCES DE L'A8 AU PALAIS DES FESTIVALS



ON SITE / MATHEZ WAREHOUSE
ESPLANADE DE LA PANTIERO
06400 CANNES, France

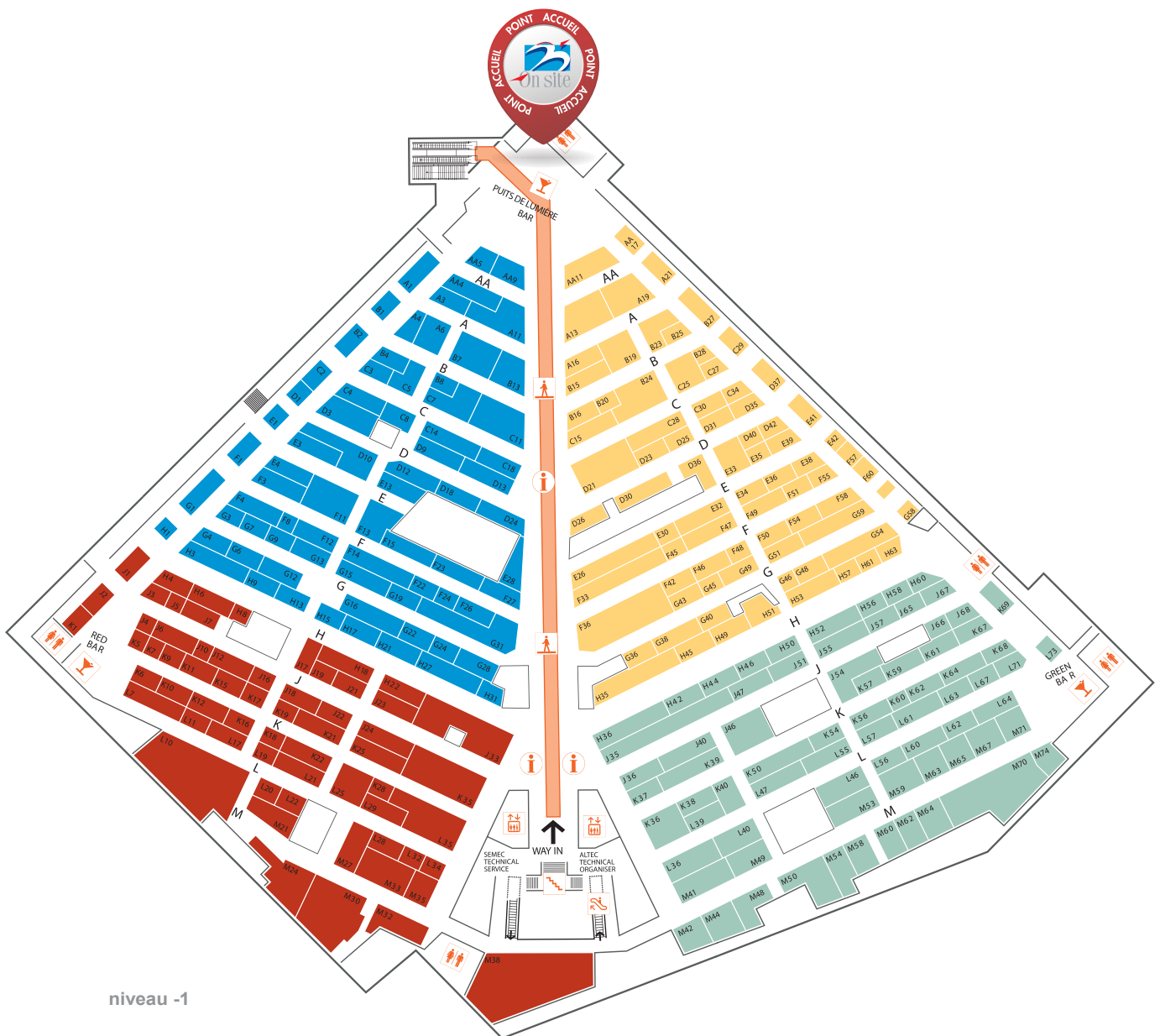


ACCESS MAP TO ON SITE MEETING POINT - 1/3

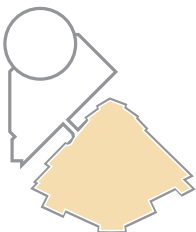
« Yellow », « Blue », « Red » & « Green » Villages

ON SITE meeting point: Puits de lumière

At the end of the exhibition October 4th 2019 starting at noon, ONSITE will supply new cardboard boxes, labels, packing material and additional shipping instructions form



niveau -1

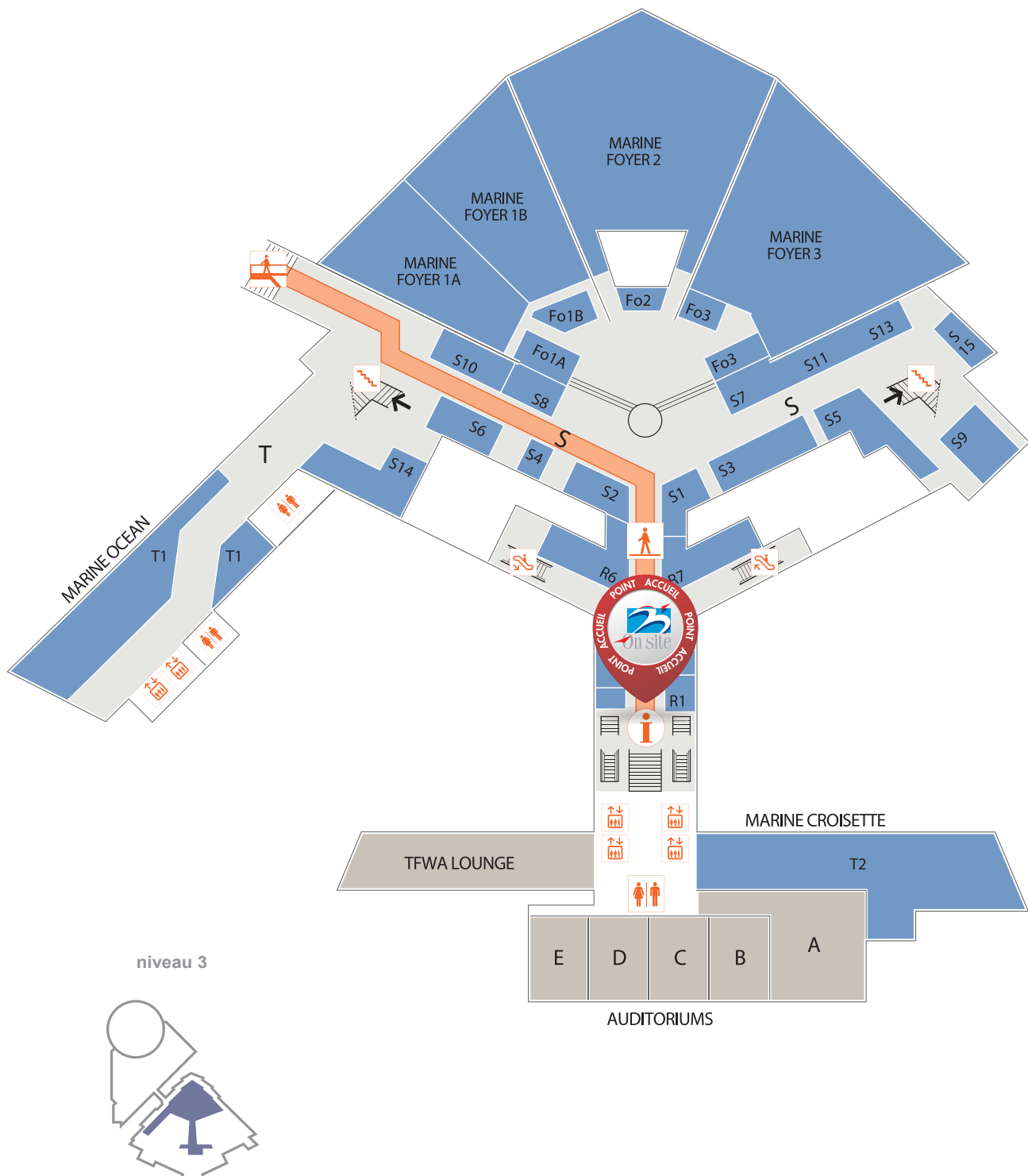


ACCESS MAP TO ON SITE MEETING POINT - 2/3

« Marine », « Golden », « Ambassadeurs » & « Terrasses 5e étage » Villages

ON SITE meeting point: 3rd level

At the end of the exhibition October 4th 2019 starting at noon, ONSITE will supply new cardboard boxes, labels, packing material and additional shipping instructions form

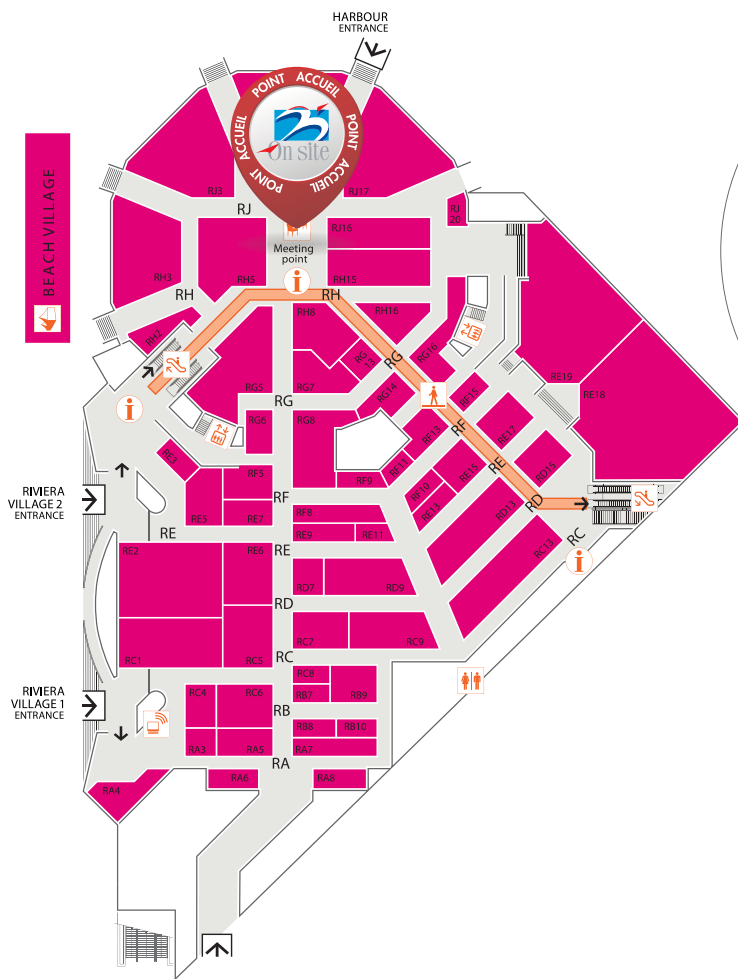


ACCESS MAP TO ON SITE MEETING POINT - 3/3

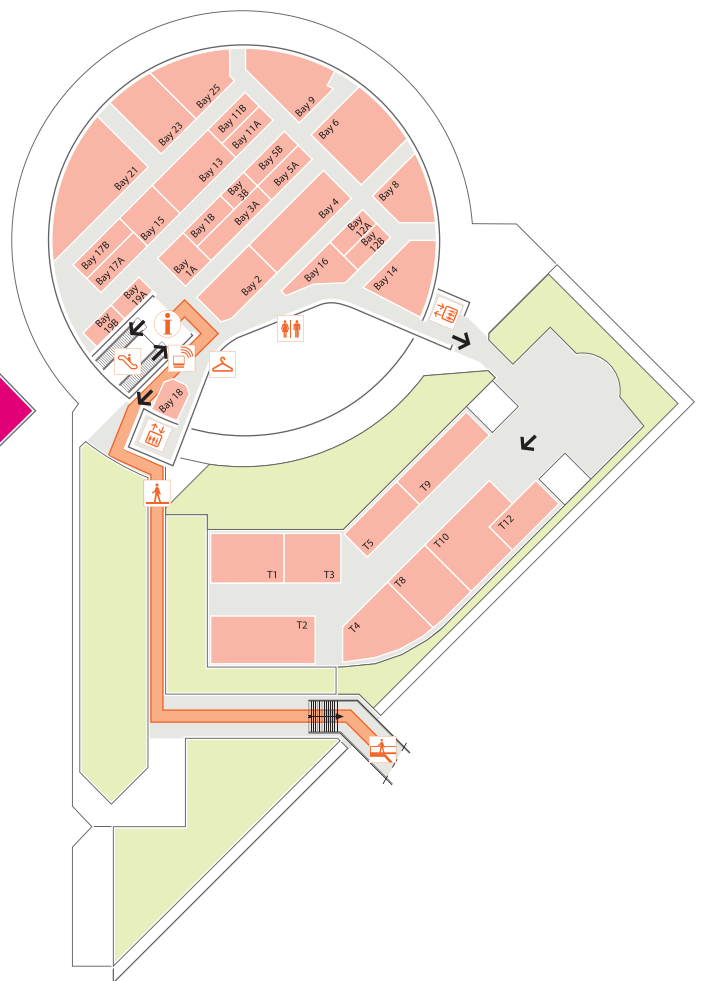
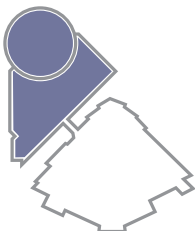
« Riviera », « Méditerranée », « Rotonde » « Lerins » & « Bay » Villages

ON SITE meeting point: Riviera village

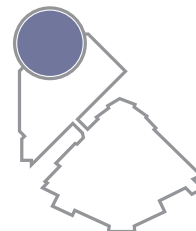
At the end of the exhibition October 4th 2019 starting at noon, ONSITE will supply new cardboard boxes, labels, packing material and additional shipping instructions form



niveau 0



niveau 1



HANDLING QUOTE REQUEST FORM

Online form available through

<http://www.info.onsitefr.com/fr/annexes/demande-de-cotation.html>Fill in and return to ccluchague@mathez-onsite-logistics.com - Att: Mme Céline CLUCHAGUEcopy: sroche@mathez-onsite-logistics.com; fandreazza@mathez-onsite-logistics.com;

You are ?

☐ Exhibitor☐ Stand Contractor

SENDER

Company Name :

Address 1 :

Zip Code :

City :

Country :

Phone :

E-mail :

Contact :

COMMODITY

Inbound transport mean :

☐ Air☐ Route☐ Mer☐ Transport Express

Product type :

☐ Stands☐ Produits

Packing type :

Customs value :

Number of pieces :

Total volume m³ :

or dimensions :

Total weight kg :

STAND DELIVERY REQUEST FORM

Online form available through:

<http://www.info.onsitefr.com/fr/annexes/rendez-vous-sur-stand.html>

Fill up and email to fandreazza@mathez-onsite-logistics.com; - Att: M. Francis ANDREAZZA

Exhibiting company's name
& village/ stand's number:

.....

Requested stand delivery
date and app. time:

.....

Details if partial delivery needed:

[illegible]



MATHEZ ONSITE LOGISTICS

1ère Avenue
le Broc Center
Bat. A - Lot 4
06510 Carros France

Tél: +(33) 04 93 29 80 16
Fax : +(33) 04 93 29 91 30

E-mails contacts

Mrs Céline CLUCHAGUE : ccluchague@mathez-onsite-logistics.com

M. Francis ANDREAZZA : fandreazza@mathez-onsite-logistics.com

M. Stéphane ROCHE: sroche@mathez-onsite-logistics.com

Excise number: FR001310E0010

To ease your participation in this show ONSITE suggests you to join the **consolidated transport** organised from your country, through its network of agents, whose details will be provided on demand